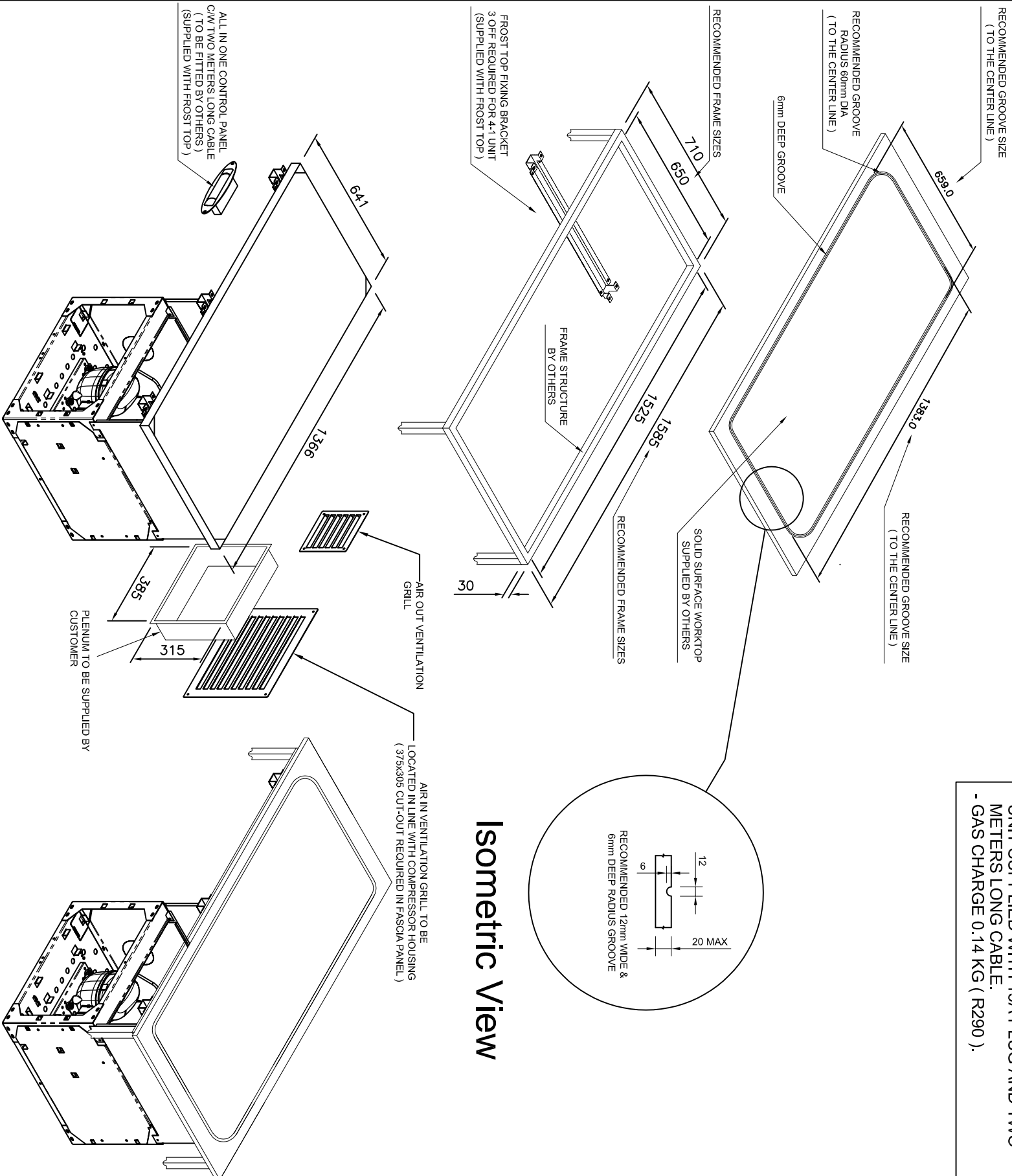


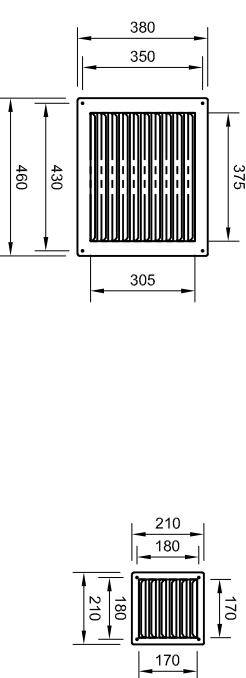
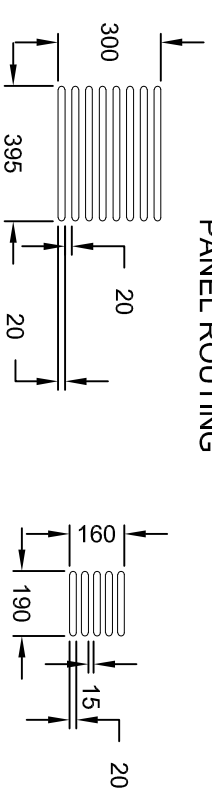
**NOTE:-**  
THE FROST TOP IS PRE FACTORY SET TO  
ACHIEVE TEMPERATURES BETWEEN -8 TO -10°C  
WHICH IS THE OPTIMUM TEMPERATURE FOR  
PRODUCING FROST ON THE WORKTOP.  
PLEASE CHECK WITH WORKTOP MANUFACTURER  
THAT THE MATERIAL IS ABLE TO PERFORM WITH  
IN THIS TEMPERATURE RANGE.

## INSTALLATION NOTES:

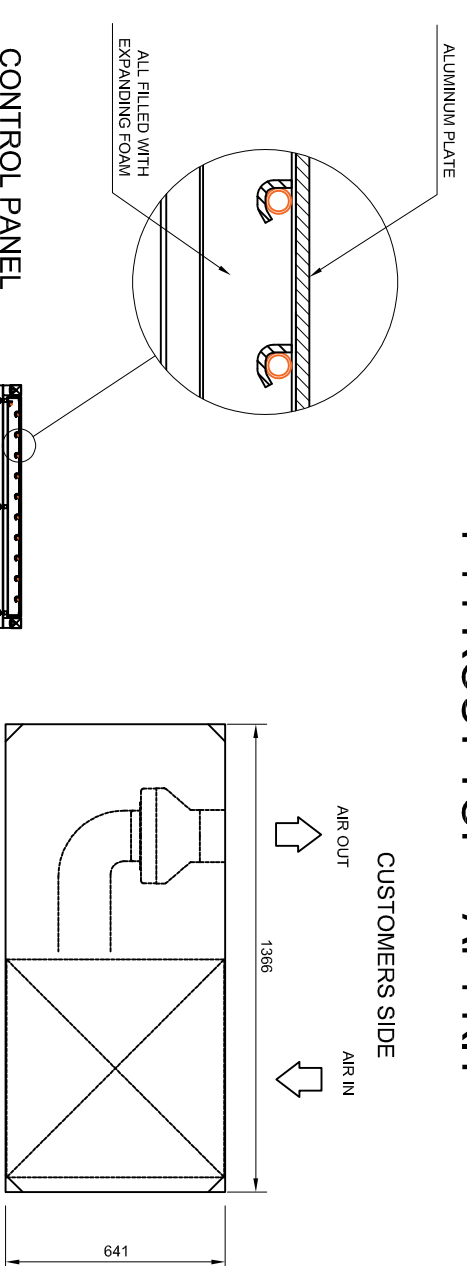
- TEMPERATURE TRANSFER COMPOUND ( SUPPLIED BY - CED ) TO BE APPLIED EVENLY IN BETWEEN SOLID SURFACE AND FROST TOP.
- ( iii) SILICONE NOT TO BE USED !!! )
- ADEQUATE DUCTING REQUIRED FOR CORRECT AIR CIRCULATION ( BY OTHERS ).
- ELECTRICAL LOAD 3.0kw 13Amp.
- UNIT SUPPLIED WITH 13A PLUG AND TWO METERS LONG CABLE.
- GAS CHARGE 0.14 KG ( R290 ).



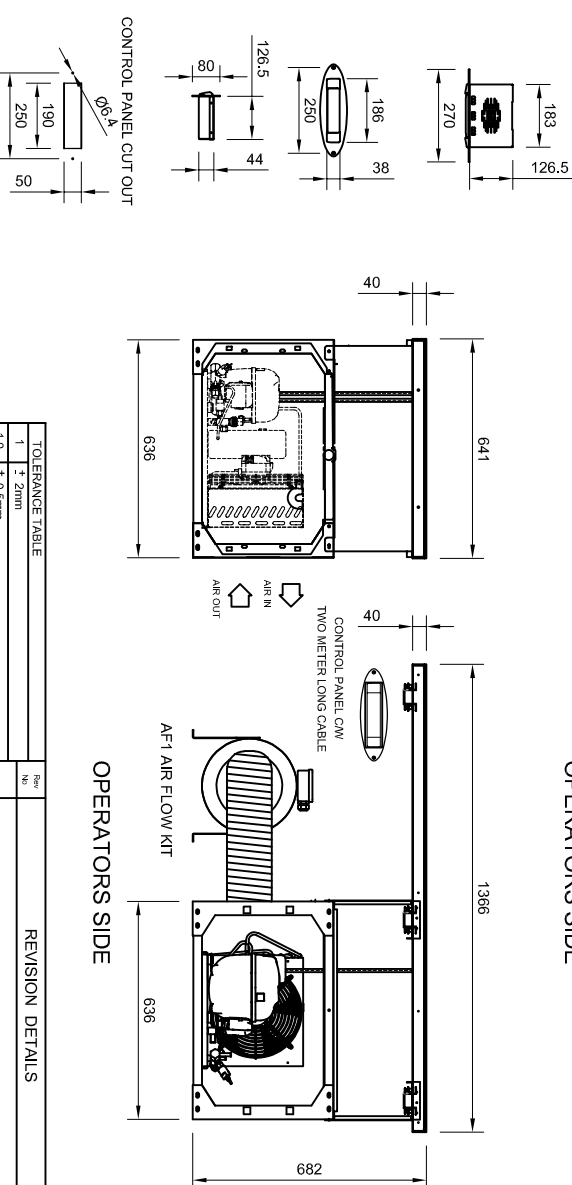
## ALTERNATE FASCIA PANEL ROUTING



## 4-1 FROST TOP + AF1 KIT



## CONTROL PANEL DETAIL



TOLERANCE TABLE		Rev	Re	REVISION DETAILS	DATE
1	± 2mm				
1.0	± 0.5mm				
SITE:					
CLIENT:		TITLE: 4-1 FROST TOP C/W AF2 AIR FLOW KIT			REV No:
DRAWN BY: MG		ORDER No:		DRG No:	
SCALE: 1:16 @ A2		DATE: 29/06/2017			